

# BACK MOUNT UNDERCOUNTER FREEZERS

Back Mounted Condensing Unit



**EVEREST**  
REFRIGERATION  
www.EVERESTref.com

## ETB – Series

• ETBF1 • ETBSF2 • ETBF2 • ETBWF2 • ETBF3



ETBF1



ETBSF2



ETBF2



ETBWF2



ETBF3

### Cabinet Construction

Heavy duty stainless steel interior and exterior, with galvanized steel finished bottom and back wall of exterior. High quality 16 gauge stainless steel worktop, ABS evaporator drain cover. 2.5" thick high density foamed-in-place polyurethane insulation. Four 4" diameter casters (front casters with brakes). Door heater installed around inside cabinet frame to prevent moisture build-up.

### Refrigeration System

- Back mounted condensing unit
- Oversized condenser and evaporator coils quickly achieve and maintain desired temperature
- Forced-air cooling with oversized evaporator fan motors providing balanced airflow throughout cabinet to ensure faster temperature drop
- Slide-out condensing unit for convenient repair and maintenance
- Front air breathing for built-in applications
- Environmentally friendly CFC free R-134A and R-404A refrigerant
- 350 watt defrost heater controlled by electrical timer
- Copper tube and aluminum fin evaporator with anti-corrosive coating
- Energy efficient condensate drain pan assembly heated by high side copper tube
- Pressure relief port for rapid cabinet re-entry
- Pre-wired and ready to plug, 115V/60Hz/1Ph, NEMA 5-15P

### Doors

- Heavy duty stainless steel interior and exterior
- 2.5" thick foamed-in-place polyurethane insulation
- Rounded corners for a sleek and modern appearance
- Heavy duty adjustable torsion spring self-closing door system
- One piece snap-in magnetic door gaskets for easy replacement
- Heavy duty recessed door handles for a flat surface
- All 2014 and newer models come standard with door locks

### Shelving

- Two epoxy coated wire shelves per section
- Stainless steel pilasters and shelf clips

### Temperature Control

- Factory preset temperature, -4°F
- Temperature setting range from -5°F to 5°F
- Easy to set analog thermostat

### Option

- 4" high stainless steel backsplash for worktop use

• Project / Customer \_\_\_\_\_

• Item No. \_\_\_\_\_

• Model No. \_\_\_\_\_

### Warranty

**5 Year — Compressor Warranty**  
**3 Year — Parts & Labor Warranty**  
Applicable to units purchased after July 1, 2014.

### Contact

201 W. Artesia Blvd, Compton, CA 90220  
T. (310) 323-6586, (800) 444-6285  
F. (310) 323-7524, (310) 761-1127



# BACK MOUNT UNDERCOUNTER FREEZERS

## Back Mounted Condensing Unit



### ETB – Series

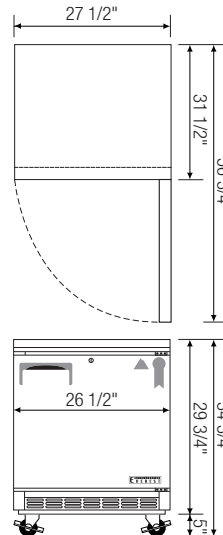
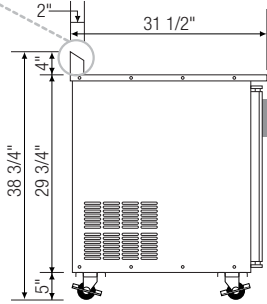
• ETBF1 • ETBSF2 • ETBF2 • ETBWF2 • ETBF3

www.EVERESTref.com

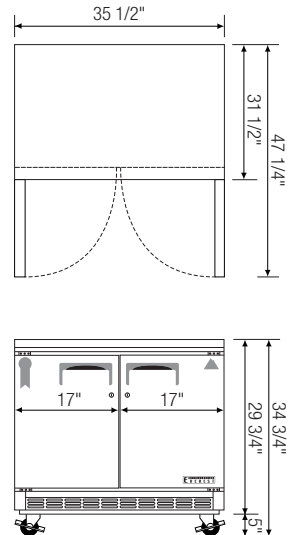
### Dimensions

#### SIDE VIEW

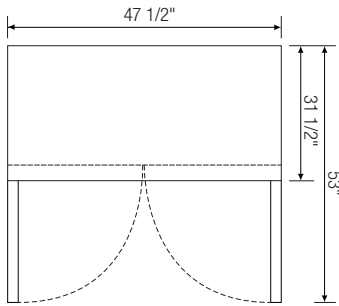
Optional  
4" high backsplash



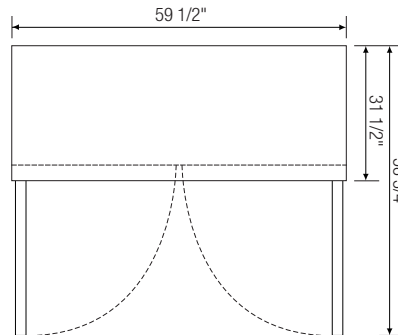
▲ ETBF1



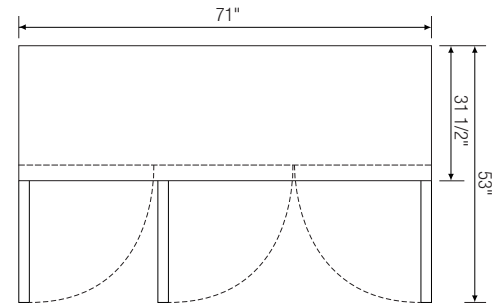
▲ ETBSF2



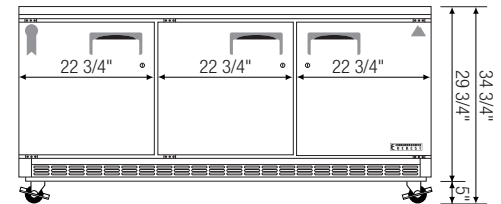
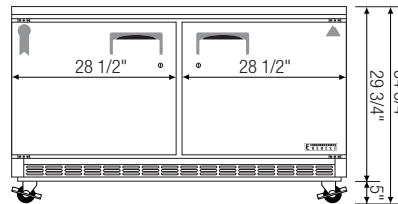
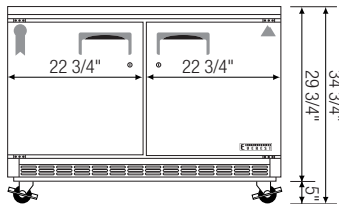
▲ ETBF2



▲ ETBWF2



▲ ETBF3



Model	Ref/ Frz/ Dual	# of Doors	Capacity (Cu.Ft.)	HP	Refrigerant	# of Shelves	Power (V-Hz-Ph)	Amps	Crated Weight (LBS)	Exterior Dimensions (Inches)			* Height does not include 5" for casters  Ref = Refrigerator Frz = Freezer Dual = Ref & Frz Combo
										L	D	H*	
ETBF1	Frz	1	5.6	1/3+	R-134A	2	115-60-1	5.20	190	27 1/2	31 1/2	29 3/4	
ETBSF2	Frz	2	7.5	1/3+	R-134A	4	115-60-1	6.40	224	35 1/2	31 1/2	29 3/4	
ETBF2	Frz	2	10.3	1/3+	R-134A	4	115-60-1	6.40	273	47 1/2	31 1/2	29 3/4	
ETBWF2	Frz	2	15	1/2+	R-404A	4	115-60-1	7.50	304	59 1/2	31 1/2	29 3/4	
ETBF3	Frz	3	18.3	1/2+	R-404A	6	115-60-1	7.67	359	71	31 1/2	29 3/4	

Disclaimer: Product dimensions are for general purposes and not absolute value. Slight variations may exist. If dimensions are critical, please contact Everest.