

SOLID SLIDE LID GLASS & PLATE CHILLERS



SOLID SLIDE LID GLASS & PLATE CHILLERS

EGC – Series

• EGC37 • EGC50 • EGC65



EGC37



EGC50



EGC65

Cabinet Construction

Heavy duty stainless steel countertop, rail and lids, with textured and laminated black vinyl exterior. Galvanized steel interior. 1 3/4" thick high density foamed-in-place polyurethane insulation. Built-in caster thread receptacles for all units.

Refrigeration System

- Side mounted condensing unit
- Oversized condenser and evaporator coils quickly achieve and maintain desired temperature
- Forced-air cooling with oversized evaporator fan motors providing balanced airflow throughout cabinet to ensure faster frosting of dry glasses and plates
- Removable side panel and slide-out condensing unit for convenient repair and maintenance
- Environmentally friendly CFC free R-134A and R-404A refrigerants
- Defrost heater controlled by electrical timer
- Copper tube and aluminum fin evaporator with anti-corrosive coating
- Energy efficient condensate drain pan assembly heated by high side copper tube
- Pre-wired and ready to plug, 115V/60Hz/1Ph, NEMA 5-15P

Lids, Locks

- Heavy duty stainless steel, easy glide and removable lids
- 3/4" thick lids, foamed-in-place polyurethane insulation
- Ratchet lock to secure lids (standard)

Shelving

- Two levels of epoxy coated wire shelves for glasses & plates

Temperature Control

- Factory preset temperature, 0°F
- Temperature setting range from -5°F to 5°F
- Easy to set analog thermostat

Options

- 2 1/2" and 4" diameter casters (3 1/2" and 5" overall height)

• Project / Customer _____

• Item No. _____

• Model No. _____



Warranty



5 Year — Compressor Warranty
3 Year — Parts & Labor Warranty
Applicable to units purchased after July 1, 2014.

Contact



201 W. Artesia Blvd, Compton, CA 90220
T. (310) 323-6586, (800) 444-6285
F. (310) 323-7524, (310) 761-1127

SOLID SLIDE LID GLASS & PLATE CHILLERS



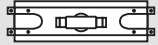
EGC-Series

• EGC37 • EGC50 • EGC65

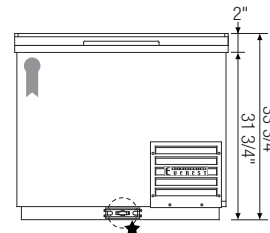
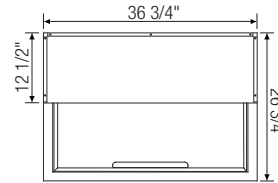
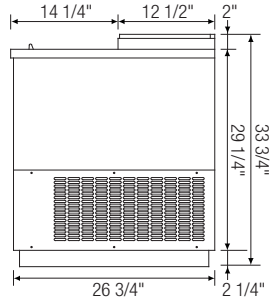
Dimensions

SIDE VIEW

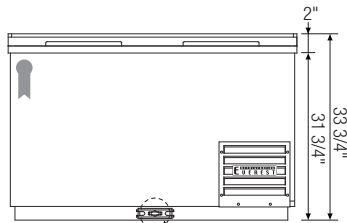
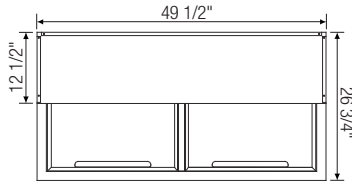
★ 3/4" O.D.



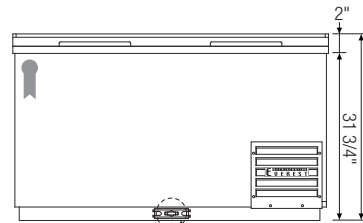
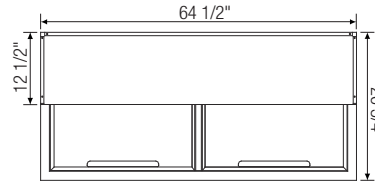
T-Shaped PVC
Drain Fittings w/
Moveable Plug



▲ EGC37



▲ EGC50



▲ EGC65

Model	Ref/ Frz/ Dual	# of Lids	Capacity (Cu.Ft.)	HP	Refrigerant	# of Shelves	Capacity 8" Mugs	Power (V-Hz-Ph)	Amps	Crated Weight (LBS)	Exterior Dimensions (Inches)			Ref = Refrigerator Frz = Freezer Dual = Ref & Frz Combo
											L	D	H	
EGC37	Frz	1	9.30	1/3	R-134A	3	160	115-60-1	5.20	202	36 3/4	26 3/4	33 3/4	
EGC50	Frz	2	13.60	1/3+	R-404A	5	230	115-60-1	5.20	246	49 1/2	26 3/4	33 3/4	
EGC65	Frz	2	18.90	1/3+	R-404A	7	290	115-60-1	5.40	293	64 1/2	26 3/4	33 3/4	

Disclaimer: Product dimensions are for general purposes and not absolute value. Slight variations may exist. If dimensions are critical, please contact Everest.