



SS SERIES FOOD WASTE DISPOSERS

Food waste disposers are a hygienic and environmentally sustainable way to manage pre- and post-consumer scraps in a foodservice establishment. The SS Series disposers are ideal for heavy-duty applications such as restaurants, schools and universities, healthcare facilities and hospitals, and government facilities.

PRODUCT FEATURES & SPECIFICATIONS

1 YEAR ON-SITE PARTS & LABOR WARRANTY

SS-SERIES

- Whether you serve 25 or 2,500 people, there is an InSinkErator disposer that's designed for your operation. From the small-capacity SS-100™ model to our large-capacity SS-1000™ workhorse, InSinkErator disposers deliver superior performance, quiet operation, maximum energy efficiency, and reliable service.



SYSTEM OVERVIEW

- Stainless steel and chrome-plated finish
- Corrosion-resistant, stainless steel grind chamber
- Heavy-duty induction motor with built-in thermal overload protection
- Enclosure provides protection against outside moisture with controlled power air flow to cool motor
- Cast-nickel, chrome-alloy stationary and rotating shredding elements
- Double-tapered Timken roller bearings provide a shock-absorbing cushion
- Triple lip seal protects motor from water damage
- Secondary spring-loaded oil seal provides double protection against water and loss of grease

CLEANING

- Disposers are easy to clean and maintain
- Wipe down exterior surfaces with a wet cloth
- Use warm soapy water on the splashguard

Commercial Disposer Sizing Chart

To determine the proper size disposer, use this recommended sizing chart. Sizing recommendations are given in general terms; actual capacities vary depending on the volume and type of food waste.

Volume Processed / Application	High Buffet/Cafeteria Government	SS-300	SS-300/ SS-500	SS-500	SS-500/ SS-1000	SS-500/ SS-1000
	Medium Full Service Restaurant	SS-200	SS-300	SS-300/ SS-500	SS-500	SS-500/ SS-1000
	Low Limited Service Restaurant/Café/ Fast Casual	SS-100	SS-200	SS-300	SS-300/ SS-500	SS-1000
		SS-100	SS-100	SS-200	SS-300	SS-300/ SS-500
		Light Majority Fruits & Vegetables	Medium 50/50 Mixture	Heavy Majority Meats & Seafood		
Food Waste Composition						

A complete collection of our product drawings is available for download at the **InSinkErator Revit/CAD Library**, which can be found at www.insinkerator.com/foodservice. Product information is also accessible on **The KCL CADalog**. More information is available from KCL at www.kclcad.com.



4700 21st STREET
RACINE, WI 53406
TEL: 800-845-8345
FAX: 262 554-3620

www.insinkerator.com/foodservice



The Emerson logo is a trademark and a service mark of Emerson Electric Co.



WHAT'S INCLUDED

- Base disposer: 1 mounting gasket
- Disposer packages: 1 mounting/bowl assembly, 1 electrical control, 1 syphon breaker, 1 solenoid valve, and 1 flow control valve (the standard flow control valve will be sent with the unit unless the optional valve is specified)

MODEL & HORSEPOWER/ELECTRICAL REQUIREMENTS (CHOOSE ONE)

Small Capacity Disposers



SS-100
1 HP

115/208-230V, 60 Hz, 1 Ph, 11.6/5.1/5.7 amps, **cULus**
 208-230/460V, 60 Hz, 3 Ph, 2.0/2.4/1.2 amps, **cULus**

120/208-240V, 60 Hz, 1 Ph, 11.6/5.1/5.7 amps, **NOM**
 100/200-230V, 50/60 Hz, 1 Ph, 10.4/5.2/5.4 amps

Water Usage:

5 GPM (18.9 LPM) standard water flow

3 GPM (11.4 LPM) reduced water flow (optional)

Medium Capacity Disposer



SS-200
2 HP

115/208-230V, 60 Hz, 1 Ph, 17.4/7.7/8.7 amps, **cULus**
 208-230/460V, 60 Hz, 3 Ph, 3.6/4.4/2.2 amps, **cULus**
 115/208-230V, 60 Hz, 1 Ph, 17.4/7.7/8.7 amps, **cULus, short body**

208-230/460V, 60 Hz, 3 Ph, 3.6/4.4/2.2 amps, **cULus, short body**
 208-240/460V, 60 Hz, 3 Ph, 3.6/4.4/2.2 amps, **NOM**

Water Usage:

7 GPM (26.5 LPM) standard water flow

5 GPM (18.9 LPM) reduced water flow (optional)

Large Capacity Disposers



SS-300
3 HP

208-230/460V, 60 Hz, 3 Ph, 6.0/7.4/3.7 amps, **CUL**
 208-230/460V, 60 Hz, 3 Ph, 6.0/7.4/3.7 amps, **CUL, short body**
 208-230/460V, 60 Hz, 3 Ph, 7.0/8.6/3.7 amps, **NOM**

415V, 50 Hz, 3 Ph, 4.9 amps
 220V, 50 Hz, 3 Ph, 7.2 amps
 380V, 50/60 Hz, 3 Ph, 4.1/3.0 amps

Water Usage:

8 GPM (30.3 LPM) standard water flow

7 GPM (26.5 LPM) reduced water flow (optional)

SS-500
5 HP

208-230/460V, 60 Hz, 3 Ph, 8.6/8.8/4.4 amps, **CUL**
 208-230/460V, 60 Hz, 3 Ph, 8.6/8.8/4.4 amps, **CUL, short body**
 230/460V, 50 Hz, 3 Ph, 9.0/4.5 amps

415V, 50 Hz, 3 Ph, 6.0 amps
 380V, 50 Hz, 3 Ph, 8.9 amps

Water Usage:

8 GPM (30.3 LPM) standard water flow

7 GPM (26.5 LPM) reduced water flow (optional)

SS-1000
10 HP

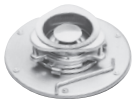
208-230/460V, 60 Hz, 3 Ph, 11.0/13.0/6.5 amps, **CUL**
 208-230/460V, 60 Hz, 3 Ph, 11.0/13.0/6.5 amps, **CUL, short body**

Water Usage:

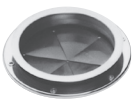
10 GPM (37.9 LPM) standard water flow

DISPOSER MOUNTING ASSEMBLIES (CHOOSE ONE)

Sink Collar Mounts



- #5 Sink Flange Kit**
for 3-1/2"–4" (88.9 mm–101.6 mm) sink opening (support legs are recommended)
#5 adaptors only available on small and medium capacity disposers.



- #6 Collar Adaptor Kit**
for welding into trough, for 6-5/8" (168.3 mm) opening, includes splash baffle



- #7 Collar Adaptor Kit**
for welding into sink, for 6-5/8" (168.3 mm) opening, includes splash baffle and stopper

Sink Bowl Mounts

Bowl Size

- 12" (304.8 mm) with one adjustable water nozzle
 15" (381.0 mm) with one adjustable water nozzle
 18" (457.2 mm) with two adjustable water nozzles

Kit Type



- Type A Sink Bowl Assembly**
- bowl
 - water nozzle(s)
 - bowl cover
 - splash baffle








- Type B Sink Bowl Assembly**
- bowl
 - water nozzle(s)
 - silver guard
 - splash baffle



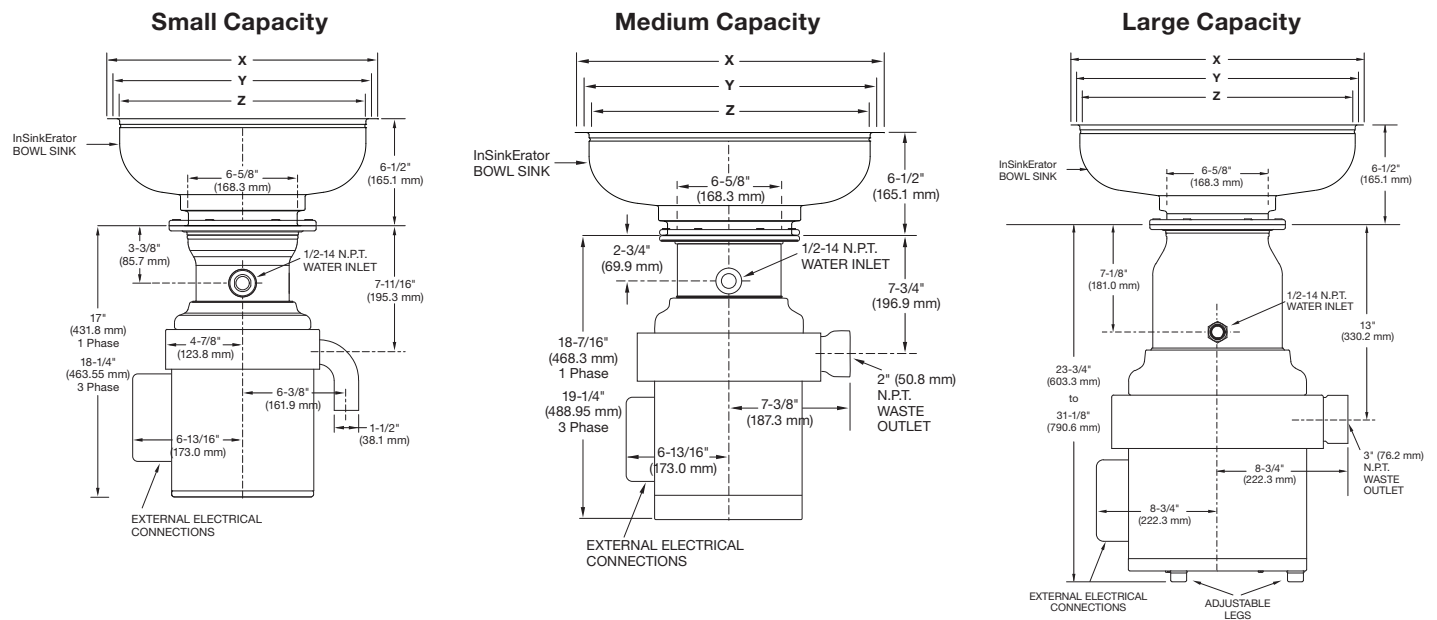
- Type C Sink Bowl Assembly**
- bowl
 - water nozzle(s)
 - splash baffle

ELECTRICAL CONTROLS (CHOOSE ONE)

<input type="checkbox"/> AS-101 Control Center AquaSaver®	<input type="checkbox"/> CC-101 Control Center	<input type="checkbox"/> CC-202 Control Center	<input type="checkbox"/> Manual Reverse Switch	<input type="checkbox"/> Manual Switch
 <ul style="list-style-type: none"> Automatically changes direction Stainless-steel housing Automatic shut-off with power loss Line disconnect Programmable post-flush Timed run Automatically regulates water flow to grind load 	 <ul style="list-style-type: none"> Automatically changes direction Stainless-steel housing Automatic shut-off with power loss Line disconnect Programmable post-flush Timed run 	 <ul style="list-style-type: none"> Automatically changes direction Stainless-steel housing Automatic shut-off with power loss 	 <ul style="list-style-type: none"> Manually changes direction Stainless-steel housing Automatic shut-off with power loss 	 <ul style="list-style-type: none"> Single direction Polycarbonate housing Automatic shut-off with power loss

DISPOSER DIMENSIONS

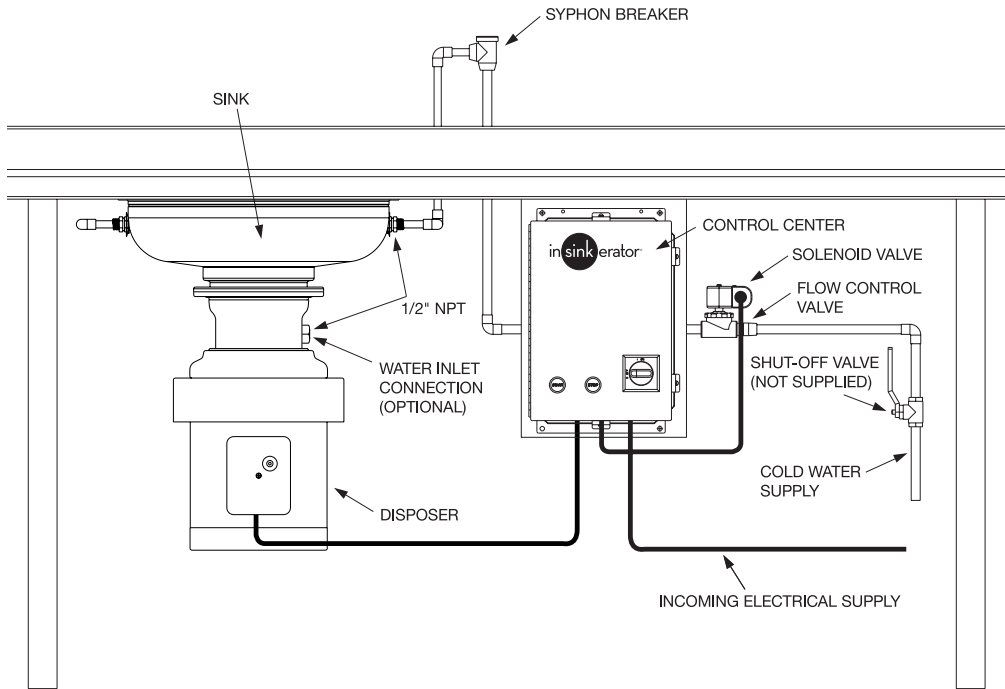
Standard models shown. A short body model is available on medium and large capacity disposers. Short body models reduce overall height by 1" (25.4 mm) on medium capacity disposers and by 3" (76.2 mm) on large capacity disposers.



If mounting directly to a sink, use dimension chart below for adaptor height in place of InSinkEratOr bowl sink height. **IMPORTANT: #5 adaptors only available on small and medium capacity disposers.**

Bowl Mounts	Flange O.D. X	Work Table Hole Y	Flange I.D. Z	Height
12" (304.8 mm)	13-1/2" (342.9 mm)	12-1/4" (311.2 mm)	12" (304.8 mm)	6-1/2" (165.1 mm)
15" (381 mm)	16-1/2" (419.1 mm)	15-1/4" (387.4 mm)	15" (381.0 mm)	6-1/2" (165.1 mm)
18" (457.2 mm)	19-1/2" (495.3 mm)	18-1/4" (463.6 mm)	18" (457.2 mm)	6-1/2" (165.1 mm)
Collar Mounts	X	Y	Z	Height
#5	Fits Standard Sink Opening: 3-1/2" – 4" (88.9 mm – 101.6 mm)			2-3/4" (69.9 mm)
#6	7-13/16" (198.4 mm)	6-7/8" (174.6 mm)	6-5/8" (168.3 mm)	1-3/16" (30.2 mm)
#7	9-1/8" (231.8 mm)	7-7/8" (200.0 mm)	7-5/8" (193.7 mm)	2-1/16" (52.4 mm)

TYPICAL INSTALLATION - BOWL



REPLACING A COMPETITIVE DISPOSER

- Refer to the Mounting Adaptor Guide or Video for adaptors that fit competitor sink bowls or cones.
- Have sink bowl/cone type with appropriate dimensions available when contacting Customer Service with questions or to place an order.

SAMPLE SPECIFICATION

InSinkErator Food Waste Disposer. Food waste grinding system with _____ HP disposer, _____ control panel. _____ Volts, _____ Hz, _____ Phase operation. _____ disposer mount. Syphon breaker with 1/2" NPT connections; flow control valve; (1) 24V water solenoid.

PROJECT INFORMATION

Item Number: _____

Model Number: _____

Quantity: _____

Electrical

Requirements:

Manufacturer: InSinkErator _____

_____ volts _____ phase

Project: _____

Dealer: _____

Address: _____

City/State/Zip: _____

City/State/Zip: _____

Contact: _____

Contact: _____

Phone: _____

Phone: _____

Installer: _____

Consultant: _____

Contact: _____

Contact: _____

Phone: _____

Phone: _____